

## **Arrival & Departure Instructions**

### **Arrival:**

1. When loading your luggage to leave for camp, please separate luggage by guys and girls. If possible, load luggage by cabins. Your busses and vans will be able to pull directly up to the dorms. With luggage separated, our staff will be able to unload you quickly and efficiently.
2. Please refer to the layout on the next page for bus arrival order. You are going to want to have your buses in the following order:
  1. Dorm 2 (Bays 8,7,6,5)
  2. W.C. Dorms (9-12)
  3. Dorm 1 (Bays 4,3,2,1)
  4. Dining Hall (DH 1-2, DH upstairs)
3. Please call the camp office when your group is 15 minutes out. If you have multiple churches, please have each leader call when their respective group is 15 minutes out. (580) 892-2600 (camp office)
4. Camp WOW staff will be waiting when you arrive. Please follow the instruction of our staff because they will be able to direct you to the appropriate dorms.
5. Camp WOW staff will unload your buses and vans. Your students will simply need to take their bags to their bunks and get ready for a great week. Make sure students know where they are supposed to be before they get off the bus or van.

### **Departure:**

1. Check out is at 10am so please make sure your buses are at Camp WOW by 9:30am. We will have another group arriving at 2pm so we need time to clean and prepare.
2. Camp WOW relies heavily on the ability of each group to thoroughly clean their dorm before departure. Please schedule an adequate amount of time for cabin clean-up on the last day (at least 1 hour).
3. Camp WOW staff will be in each dorm to assist the campers as they clean. Please make sure your dorm captain has inspected the dorm before you depart.
4. You will be informed of and charged for any damages resulting from your group. Thank you so much for taking good care of these facilities.
5. Have a great drive and please come back next summer!

## Dorms and Capacities

### Dorm 1 (Guys dorm)

Bay 1: 58 people  
Bay 2: 58 people  
Bay 3: 58 people  
Bay 4: 58 people

### Dorm 2 (Girls dorm)

Bay 5: 58 people  
Bay 6: 58 people  
Bay 7: 58 people  
Bay 8: 58 people

### Dining Hall

Girls: 46 people  
Guys: 46 people  
Upstairs: 40 people (only has 2 showers, stalls and sinks)  
Loft: 11 people (Lodge pricing; only 1 bathroom)

### Worship Center

Bay 9: 46 people  
Bay 10: 46 people  
Bay 11: 46 people  
Bay 12: 46 people

**Total dorm capacity:** 791(without lodge)

**Total Lodge capacity:** 44

**Total capacity:** 835

# Lodge Assignments



**Camp**

**WOW**

Group Name \_\_\_\_\_ Dates \_\_\_\_\_

#1 (sleeps 2) Full bed

\_\_\_\_\_

#2 (sleeps 3) King bed & 1 twin

\_\_\_\_\_

#3 (sleeps 4) Full bed & 1 double sleeper couch

\_\_\_\_\_

#4 (sleeps 3) Full bed & 1 twin

\_\_\_\_\_

#5 (sleeps 4) Full bed & 2 twins

\_\_\_\_\_

#6 (sleeps 4) Full bed, 2 twins

\_\_\_\_\_

#7 (sleeps 5) Full bed, 1 twin & 1 bunk

\_\_\_\_\_

#8 (sleeps 5) Full bed, 1 twin & 1 bunk

\_\_\_\_\_

#9 (sleeps 3) Full bed & 1 twin

\_\_\_\_\_

#10 (sleeps 3) Full bed & 1 twin

\_\_\_\_\_

#11 (sleeps 4) Full bed & bunk bed

\_\_\_\_\_

#12 (sleeps 4) Full bed & bunk bed

\_\_\_\_\_

Loft (sleeps 9) Twin & 4 bunks

\_\_\_\_\_

\_\_\_\_\_

## **Rules and Regulations**

1. High Ropes elements are to be used only when trained Camp WOW staff is present.
2. Waterfront is closed unless Camp WOW life guards are on duty. Please stay away from the water when life guards are not on duty.
3. No one is permitted on the big hill in front of the dining hall at any time.
4. After meals, all food and paper products must be placed in a trash can.
5. Please do not throw rocks at anyone or anything for any reason.
6. Please do not throw any item in the toilet other than toilet paper.
7. No guys in girls' dorms or girls in guys' dorms. (Age doesn't matter.)
8. Please stay out of the lodge unless you are a lodge guest.
9. All vehicles should be parked in the lodge parking lot or in the parking lot behind the Worship Center.
10. Please stay on trails and always hike in pairs.
11. Do not operate Camp WOW vehicles for any reason. (This includes church staff, unless permission has been granted by Camp WOW management.)

## **Contact Information & Emergency Phone Numbers**

*While you are at Camp WOW, we want you to know how to get ahold of us when you need us. Please use the following contact information at any time while you are here. Please start at the top and work your way down. Thanks.*

**Come up to the office. We may be there!**

**Brett Wiseman**

(817) 673-2024 (cell)

**Tracy Hill**

(580) 892-2600 (office & home)

*\*Please don't call after 9pm except in emergencies.*

---

*In the unfortunate event that medical or emergency assistance is needed, please use the following numbers and then contact Camp WOW staff immediately.*

Fire/Police/Ambulance: 911

Valley View Hospital Emergency Room, Ada: (580) 421-1120

*\*Directions to the hospital are provided in this packet.*

Poison Control Center: (800) 222-1222

**Walk on Water**  
**Agreement to Participation**  
**Assumption of Risk and Release of Liability**  
**PLEASE READ BEFORE SIGNING**

The undersigned acknowledges that during the session that the applicant has requested to participate in, Certain risks and danger may occur. The undersigned recognizes that such risks and danger may include Loss or damage to personal property, physical or psychological damage and/or injury, not excluding fatality due to accident. I certify that I am completely healthy (both physically and emotionally) and capable of participating in this session. I have listed on the medical information form medical conditions That WALK ON WATER Inc. should be aware of which may hinder my participation in the session. However, I understand that it is solely my responsibility to determine whether there is any medical reason That I should not participate in the session and to obtain approval for any and all activities from the appropriate Health-care providers. The health history is correct as far as I know, and the person herein described has permission To engage in all prescribed camp activities except as noted. I hereby authorize the medical personnel selected by The camp director and/or church leader to order x-rays, routine tests, treatment, and necessary transportation for Me/my child as deemed necessary. I, individually and on behalf of the minor and all other family members, Executors or administrators, do hereby release, forever discharge, and agree to hold blameless WALK ON WATER Inc. and its counselors, staff, employees, agents, and lessors from any and all liability, claims, INCLUDING, BUT NOT LIMITED TO THE NEGLIGENCE OF WALK ON WATER Inc. STAFF, DIRECTORS, COUNSELORS, EMPLOYEES, AGENTS and LESSORS, or demands for personal injury, sickness, or death, as well as property Damage and expenses, of any nature whatsoever which may be incurred by the undersigned and the participant While said person is participating at WALK ON WATER. In consideration of, and as part payment for, the Right to participate in such a program and the services arranged for me by WALK ON WATER Inc. its staff, Directors, counselors, employees, agents and lessors, from any and all liability, actions, causes of action, INCLUDING BUT NOT LIMITED TO THE NEGLIGENCE OF WALK ON WATER INC DIRECTORS, COUNSELORS, EMPLOYEES, AGENTS and LESSORS, debts, claims, and demands of every kind and nature Whatsoever, whether for bodily injury, property damage or loss otherwise, which I now have or which may arise From or in connection with my program or participation in any other activities arranged for me by WALK ON WATER Inc. its staff, directors, counselors, employees, agents, and lessors, for all members of my family, Including any minors accompanying me. I SPECIFICALLY AGREE THAT MY AGREEMENT TO INDEMNIFY AND HOLD HARMLESS WALK ON WATER INC. ITS STAFF, DIRECTORS, COUNSELORS, EMPLOYEES, AGENTS and LESSORS, INCLUDES ALL LITIGATION COSTS AND ATTORNEY FEES FOR ANY LITIGATION BROUGHT ON BY MYSELF, ON BEHALF OF THE MINOR, IF APPLICABLE, OR ANY OTHER FAMILY MEMBER. I grant permission to WALK ON WATER to use photographs and any video taken by WALK ON WATER for use on web sites or other electronic form or media, without notifying me. I hereby waive any right to inspect or approve the photographs or electronic matter that may be used in conjunction with them now or in the future, whether that use is known to me or unknown, and I waive any right to royalties or other compensation arising from or related to the use of the photographs. I hereby agree to release and hold harmless WALK ON WATER, via electronic or media, from and against any claims, damages or liability arising from or related to the use of the photographs, including but not limited to any re-use, distortion, blurring, alteration, optical illusion or use in composite form, either intentionally or otherwise, that may occur or be produced in production of the finished product. I also state that I am not under, and will not be under the influence of any Chemical substance including alcohol. I fully understand that my physical activity involves risks of injury. I also understand that my participation in this WALK ON WATER Inc. program is entirely VOLUNTARY. I enter into this session and take full responsibility for my decision to participate or not to participate and agree To follow all safety instructions.

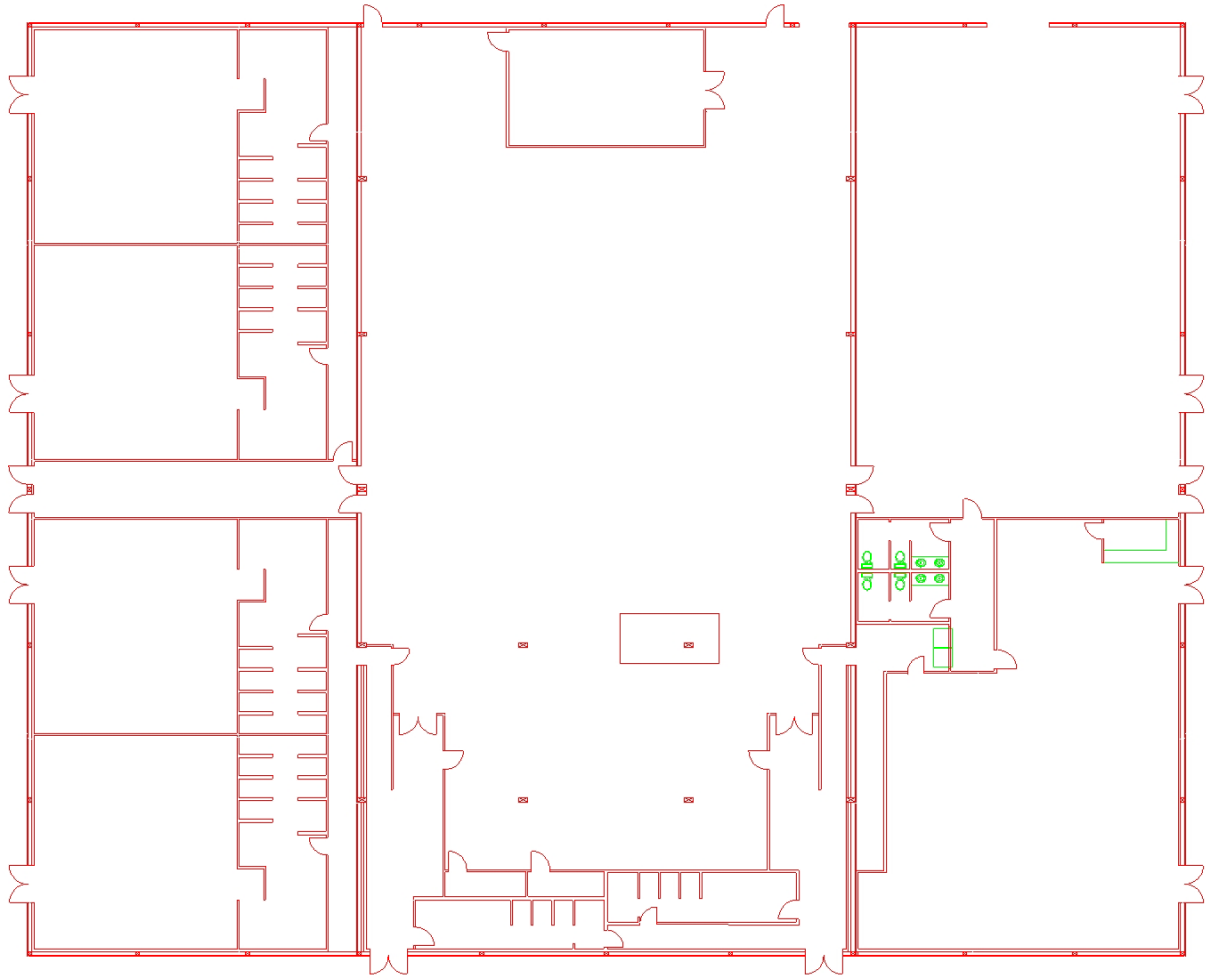
_____	_____	_____
Name of Participant (please print)	Signature of Participant (If under 18, parent or guardian must sign)	Date

_____	_____
Signature of Witness	Date

## WOW Cash Card

The Camp WOW cash card is a great opportunity for you to help ensure your student has money to spend in the Snack Shack, while also protecting them from having cash lost or stolen. The cash card allows anyone to put money on a card that has an individual bar code assigned to a particular student. This way you never have to carry cash and if you lose your card we still have your info and balance left in our system. If you lose cash or it gets stolen, you are pretty much out of luck. However, with the Camp WOW cash card, we always have a record of how much money is in your account. This is a great service that we hope you will take part in. You can pre-purchase a card at our online store or purchase the student can purchase one when they arrive. The card is not redeemable for cash. If there is a balance left on the card at the end of your camper's stay, contact us for instructions on how to use the funds at our online store.

\*If over \$5.00 is left on the card, you can contact us within 1week of leaving Camp WOW to have your balance refunded to your credit card. Contact us at [store@campwow.com](mailto:store@campwow.com)



## **Worship Center: Tech Information**

### **Sound**

1. Allen & Heath GL2400-24 Mixer
2. Mains: 3 JBL AM4215/95
3. Subs: 2 MRX528S
4. Monitors: 4 JBL MP415
5. DBX Driverack 260 (FOH Processor) - Main EQ, crossover, etc.
6. DBX 1231 Monitor EQ
7. Compressor/Limiter- DBX 266XL (4 channels)
8. 1 Sennheiser EW112-G2 Wireless Lavalier w/Countryman Ear set mic
9. 1 Sennheiser EW135-G2 Wireless Hand Held
10. CD/DVD Player

\*Also included are all necessary cables, mics, mic stands, Direct boxes, etc.

### **Video**

1. 2 Screens (sides of stage) 10' (width) x 7' (height)
2. 2 Panasonic PT-L520U Projectors (Rear Projection)
3. Kramer VP719xl 1x7 Seamless Scaler Switcher
4. Computer
5. VGA input for personal laptop or computer
6. DVI input for personal laptop or computer (mac)

\*The Worship center will have no supplemental lighting but will have a 200amp disconnect available for any additional lighting brought by each group.

## **Dining Hall: Tech Information**

### **Sound**

1. Mackie 24-4 Mixer
2. Mains: 4 Yamaha 15"
3. Subs: 4 Yamaha 18"
4. Monitors: 4 Yamaha 18"
5. DBX Driverack 260 (FOH Processor) - Main EQ, crossover, etc.
6. DBX 1231 Monitor EQ
7. Compressor/Limiter: DBX 266XL (4 channels)
8. 1 Sure Wireless Lavalier
9. 1 Sure Wireless Hand Held
10. CD/DVD Player

\*Also included are all necessary cables, mics, mic stands, Direct boxes, etc.

### **Video**

1. 1 Panasonic PTD 5500U
2. 1 Panasonic WJ-MX20 Digital Mixer
3. Computer
4. VGA and HDMI input for personal laptop or computer

**For more information or specific questions, please contact [Brett@campwow.com](mailto:Brett@campwow.com) or call (580) 892-2600.**



Stay in touch this summer with



# Online Photos, News, & Camper Email!

We are excited to tell you about our partnership with Bunk1.com! Bunk1's secure, easy to use, summer website services let you stay in touch with your camper all summer!

**RETURNING PARENTS:** If you had an account at this camp last summer, you can continue to use your old username and password. Simply sign in at the link below. The first time you visit the site you will be prompted to update your contact information and re-activate your account.

## GET STARTED TODAY

To set up a new account and visit our Online Community:

1. Go to our website at **www.campwow.com**
2. Click the "View Pics and Send Email" orange button\* (middle of page)
3. Click the "Register Now" link
4. Enter your Pre-Approved Registration Code: **128586CWW**
5. Fill out all the required information
6. Purchase Bunk Note credits (*Skip this step if only looking at the pictures*)
7. View camper pictures and send an email to your camper!

\*If you can't find this button, go to [www.campwalkonwater.bunk1.com](http://www.campwalkonwater.bunk1.com) and continue on to the next step

\*\* For your camper's safety, please do not share the Pre-Approved Registration code above.

## FREQUENTLY ASKED QUESTIONS

### How do I view pictures?

Follow the instructions above except, after registering, simply sign in and click on the Photo Gallery button. Photos are kept in folders found on the left side of the page below the words "Image Folders". Click on any folder to see the pictures within that folder. You can even purchase prints or other photo gifts (e.g., t-shirts, mugs) of your favorite pictures! **There is no cost to view pictures.**

### How do I send a Bunk Note (one-way email) to my camper?

Follow the instructions above except, after registering, simply sign in and click on the Bunk Notes button. Enter your camper's name, select the correct cabin, type your message, and hit the "Send" button.

### Can other relatives use these services?

Certainly. Once you have set up your account, you will be able to invite other people to access these services.

### Why do I have to pay to send Bunk Notes (one-way email)?

Each morning, the Bunk Notes system bundles and sorts the messages for us to print out and distribute to campers. It also protects us from computer viruses and allows us to easily manage these emails. Your payment helps us cover the cost of the system, paper, ink, and labor and, more importantly, frees us to do what we do best – be with your kids! Bunk Note credits cost \$1 each and are purchased in packs of various sizes.

### What do I do if I lost my username and password?

You can get it online by going to [www.Bunk1.com](http://www.Bunk1.com) and clicking on the link "Lost Your Password?" (to the left of the page below the sign in button). You will receive an email with your username and password within a few minutes.

## QUESTIONS OR PROBLEMS?

Please call Bunk1 at 1-800-216-9472 or go to [www.bunk1.com/contact.asp](http://www.bunk1.com/contact.asp)



You have never played laser tag like this before. You do not have to wear a big bulky vest. Outdoor laser tag is one of the quickest growing action sports in the nation. If you think paintball is fun you have got to try out outdoor laser tag. We play on several different courses with natural protection and man-made bunkers. We have purchased the most advanced outdoor laser tag system in the world. Our guns work up to 1200ft outside in the daylight. With 20 lives each game and 20 clips of 80 rounds you get to be heavily involved the whole time. It is not one hit and you're out like paintball. We are the only camp in the entire nation with outdoor laser tag. You can sign up at camp when you arrive, pre-register with your church, or online at [www.campwow.com](http://www.campwow.com) at our online store.

*Each session is about an hour long and 3-4 games  
Only \$8.00/session, \$14.00/2 sessions, \$20.00/ 3 sessions*

## **Things to Bring**

1. Bible and any other quiet time material
2. Bedding(sheets, sleeping bag, pillow)
3. Modest swimsuits
4. Clothes and shoes that you can get dirty in
5. Bathroom items (towel, toothbrush, etc..)
6. Guitar or other musical instrument
7. Sunscreen
8. Sandals
9. Medication (that must be turned into the nurse)
10. Camera
11. Spending money
12. Good Attitudes.

## **Things NOT to Bring**

1. Alcohol
2. Weapons of any kind!!! (i.e., paintball guns, pellet guns, knife, etc.)
3. Drugs
4. Sexual material
5. Tobacco of any kind
6. Immoral music
7. Revealing clothing (Girls and Guys-if there's any question, leave it at home!!!)
8. Portable electronics are left up to the church's discretion (Camp WOW is not responsible for lost, stolen or damaged items if they are brought)

